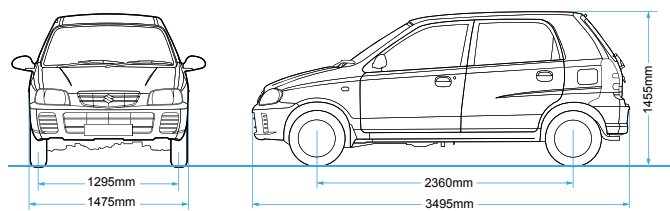


## EQUIPMENT

ALTO		STANDARD	DELUXE
Transmission		5MT	5MT
<b>Comfort</b>	Power steering	—	●
	Electric windows	—	●
	Central door locking	—	●
	Heater	●	●
	Air conditioning	●	●
	Antenna	●	●
<b>Instrument panel</b>	Tachometer	—	●
	Tripmeter	●	●
	Light-off reminder and key-off reminder	●	●
	Cigarette lighter	●	●
	Steering wheel	2-spoke urethane	2-spoke urethane
	<b>Interior</b>	Cabin light (3-position)	Front
Sun visor (both sides)		●	●
Vanity mirror and ticket holder (driver's side)		—	●
Console box with cupholders		●	●
Day/night rearview mirror		●	●
Centre console box		●	●
Material of front & rear seats		Fabric	Fabric
Reclining and sliding front seats		●	●
Front-seat head restraints		●	●
Split, foldable rear seat		●	●
Cloth accent front & rear door trims		—	●
Front door trim pockets		●	●
Rear luggage cover		●	●
Assist grips		●	●
Tailgate opener		—	●
Fuel lid opener		●	●
<b>Exterior</b>	Front grille with chrome garnish	—	●
	Green tinted glass windows	●	●
	Halogen headlights	●	●
	Manually adjustable outside mirrors	●	●
	Front wipers (2-speed, intermittent)	●	●
	Rear window wiper & washer / demister	●	●
	Tailgate outer handle	●	●
	Full wheel covers	—	●
	Coloured bumpers	—	●
	Front mud flap	—	Optional
<b>Safety</b>	High-mounted stop lamp & rear fog lamp	●	●
	Front seatbelt pretensioners	●	●
	Adjustable shoulder anchorage	●	●
	Childproof rear door locks	●	●
	Side impact beams (front doors)	●	●
	Immobilizer	●	●
	Visible VIN	●	●

## DIMENSIONS

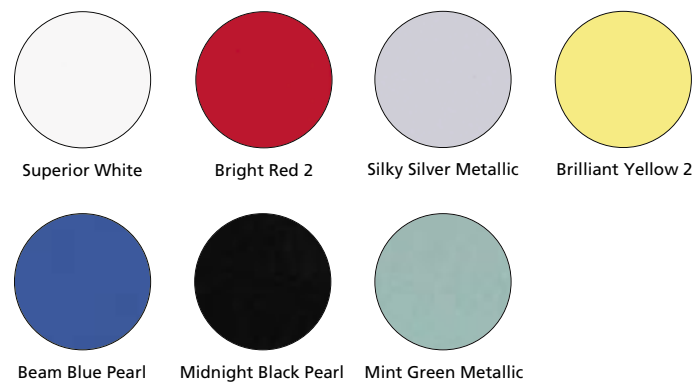


## SPECIFICATIONS

ALTO		5-DOOR		
Transmission		5MT		
<b>Dimensions</b>	Overall length	mm	3,495	
	Overall width	mm	1,475	
	Overall height	mm	1,455	
	Wheelbase	mm	2,360	
	Tread	mm	1,295	
		mm	1,290	
<b>Weights</b>	Minimum turning radius	m	4.6	
	Curb weight	kg	805*	
<b>Engine</b>	Gross vehicle weight	kg	1,165	
	Type	F10D Water cooled, SOHC		
<b>Transmission</b>	Cylinders	In-line 4		
	Number of valves	16		
	Piston displacement	cm <sup>3</sup>	1,061	
	Bore x stroke	mm	68.5 x 72.0	
	Compression ratio	10.0		
	Maximum output [EEC net]	kW/rpm	46/6,000	
	Maximum torque [EEC net]	Nm/rpm	85/3,200	
	Fuel distribution	MPI		
	Maximum speed	km/h	155	
	CO <sub>2</sub> emission	Urban	L/100km	6.5
		Extra-urban	L/100km	4.0
		Combined	L/100km	4.9
	<b>Chassis</b>	Type	5-speed All-synchromesh	
Gear ratio		1st	3.416	
		2nd	1.894	
		3rd	1.280	
		4th	0.914	
		5th	0.757	
Reverse	3.583			
Final gear ratio	3.789			
<b>Capacity</b>	Steering	Rack and pinion		
	Suspension	Front	MacPherson strut and coil spring	
		Rear	Isolated trailing link and coil spring	
	Brakes	Front	Ventilated disk	
Rear		Drum, leading and trailing		
Tyres	155/65R13			
<b>Capacity</b>	Seating	4		
	Fuel tank	35L		
		(Manufacturer data)	725L	
		Luggage capacity (Rear seatback folded, VDA)	432L	
(Rear seatback raised, VDA)	177L			

\* Curb weight increases by 10kg with air-conditioner.  
\* Curb weight increases by 5kg with ABS.

## BODY COLOURS



# ALTO

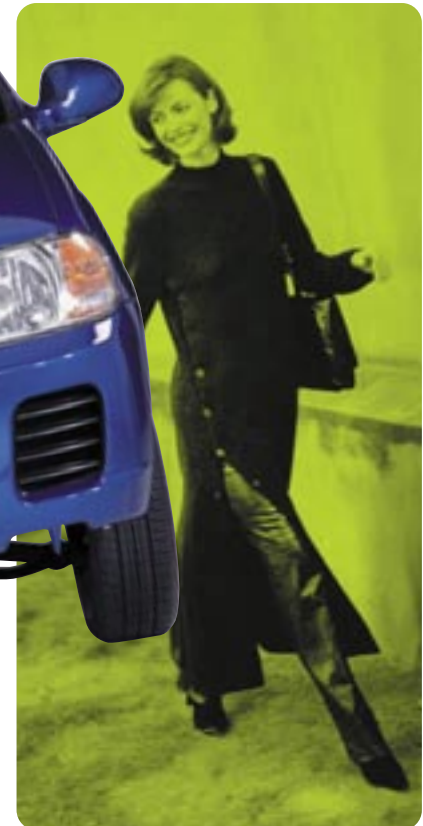
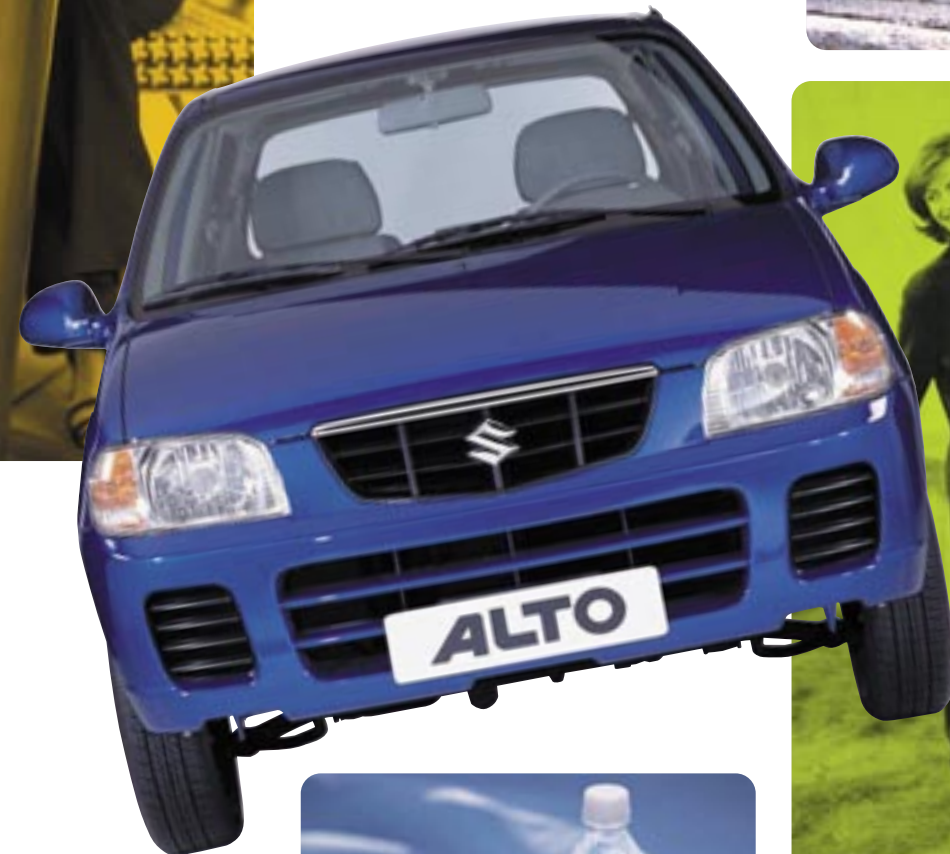
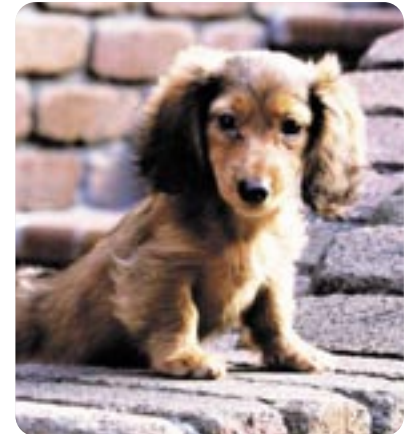


Photo : Models shown are for European market (Deluxe) • Front mud flap, Air conditioning, Digital clock are optional.

All photos appearing in this brochure were shot on roads designated for vehicle use and with the specific permission of the relevant authorities.

**SUZUKI MOTOR CORPORATION**  
300 TAKATSUKA, HAMAMATSU, JAPAN

Standard and optional equipment availability may vary for individual markets.

Please enquire at your dealer, as specifications and illustrations may refer to models not available in your region. SUZUKI MOTOR CORPORATION reserves the right to change, without notice, prices, colours, materials, equipment, specifications and models, and also to discontinue models.

Leave only footprints, take only memories. Show your respect for the environment through careful driving that safeguards all inhabitants of forest and field. Thoroughly understand the capabilities of your vehicle and learn the techniques of off-road travel. The beauty of outdoor activities is dependent on the continuing beauty of Nature.



Sana'a, Hodeida, Taiz, Ibb  
Tel: (+967) (t) 201359, 201319

Showroom (Sana'a): 404340

E-mail: suzuki@yemen.net.ye,

Downloaded from: www.sabehagroup.com



**Earth  
friendly**

**ALTO**

**People  
friendly**

**Town  
friendly**



**Even cleaner, more fuel-efficient  
performance. Compact dimensions  
for easy driving and parking.**

**A roomy interior with  
lots of handy features.**

**It's Suzuki's response to your  
everyday needs.**

**A "New Live Compact" — the ALTO.**

**Want to get more enjoyment every day?  
The ALTO is your answer.**



Since you drive every day, you want a compact, easy to operate vehicle. But you need ample passenger space and luggage room as well. That's why Suzuki gave the ALTO a packaging concept that is "Compact but Spacious". The ideal design for a compact vehicle will increase your enjoyment every day.

(The popular Suzuki ALTO has brought enjoyment to 7.3 million owners worldwide since its debut in 1979.)



**Driving the ALTO is a joy  
whether you drive in the city or on a highway.**





**It's so powerful and efficient, you can't resist taking the long way home.**





**Easy to see. Easy to operate.**

The ALTO's new cockpit, with functional instrument panel, was designed for clear visibility and easy operation. A high front hip point and wide front view create comfort and safety, so you can drive with great confidence. The urethane steering wheel fits naturally in your hands, offering a clear view of metres on instrument panel, which are laid out for easy reading at a glance. Power steering, front power windows and power door locks\* provide you with more comfort and better operability.

\*Power steering, front power windows, power door locks are available on the Deluxe model.



**3 occupants**  
Long items are easily loaded with one rear seatback folded down.  
(Please note that the goods should be fixed whi



**4 occupants**  
The ALTO provides ample luggage space even while seating 4 people.

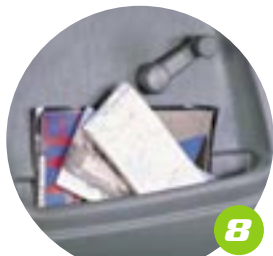
**All the comforts of ample space and utility, with thoughtful refinements everywhere.**

**Roomy cabin with versatile luggage**

Despite its compact body, the ALTO is spacious and comfortable inside. Generous headroom, provided by a high ceiling, contributes to a stress-free driving experience. A greatly expanded luggage space allows storage of large loads on shopping and outings. Rear seatbacks fold separately, enabling versatile arrangements to suit the size and amount of luggage you load.

**2 occupants**  
Folding down both rear seatbacks creates a maximum 725-litre storage space (Manufacturer data).

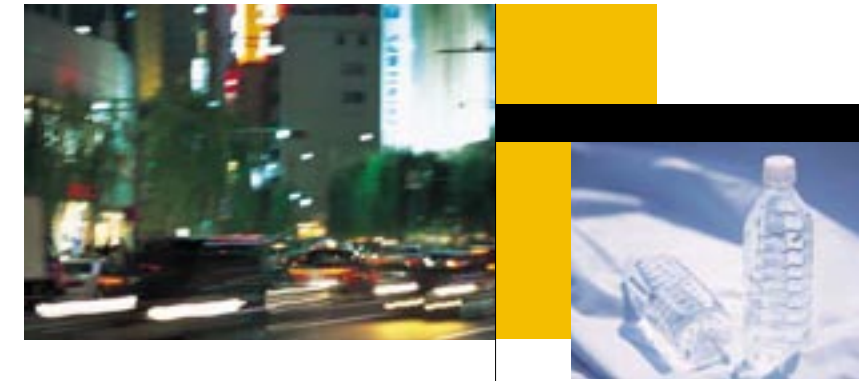
**Handy features for driving comfort.**



- 1 Halogen headlights
- 2 Manually adjustable outside mirrors
- 3 Day/night rearview mirror
- 4 Cabin light [3-position]
- 5 Vanity mirror and ticket holder [driver's side] (Deluxe)
- 6 Air conditioner
- 7 Front power windows and Power door locks (Deluxe)
- 8 Front door trim pockets
- 9 Cupholders
- 10 Childproof rear door locks



**So powerful, clean and fuel efficient  
you can't help but drive with confidence.**



**A new 1.1-litre 16-valve engine  
for a new environment-conscious era.**

**F10D**  
**Water cooled in-line 4 cylinders**  
**SOHC 16-valve 1,061cc Engine**

Maximum output (EEC net) :  
**46kW/6,000rpm**

Maximum torque (EEC net) :  
**85Nm/3,200rpm**

Fuel-efficiency (SMT, Combined) :  
**4.9L/100km**

**Powerful new clean-running engine.**

The ALTO is truly earth-friendly. In fact, its newly developed engine is one of the cleanest in the world (CO<sub>2</sub> emissions: 119g/km on 5MT model). At the same time, in recognition that you'll be driving every day, Suzuki made the ALTO quite powerful as well as fuel-efficient.

**5-speed manual transmission**

Gear shifting is easy with the all-synchromesh 5-speed manual transmission. Settings for both 4th and 5th gears provide an overdrive cruising feel and ensure fuel-efficient highway driving.



**Smooth riding comfort,  
even on rough roads.**

The reliable suspension, both front and rear, efficiently absorbs the effects of vibration and bumps for smooth ride comfort. Suzuki also lengthened the wheelbase to realize the ride quality a class above.

**Agile handling and  
small turning radius.**

The minimum turning radius of the ALTO is one of the smallest in the world, making it easy for parallel parking and even u-turns in heavy city traffic.

