

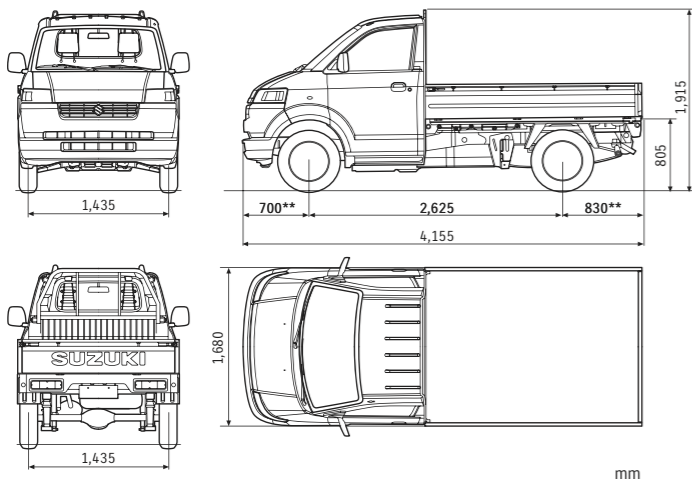
CARRY Pick-up



Major Equipment:

Front mud flaps / Green-tinted windows / Front 2-speed wipers / 2-spoke polypropylene steering wheel / 3-spoke urethane steering wheel* / Power steering* / Manual air conditioner* / Antenna* / 2 speakers* / 3-position front cabin light / Sun visors (Driver's side with ticket holder + passenger's side) / Passenger's side access support grip / Cigarette lighter and ashtray / Vinyl seat upholstery / 3-point ELR front seatbelts / Side impact door beams
*Equipment may vary for individual markets.

Dimensional Views

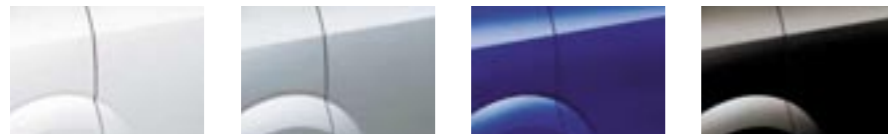


Major Specifications

Body Type	Pick-up		
Grade			
Engine	G15A	G16A	
Transmission	5MT		
Dimensions			
Overall length	mm	4,155	
Overall width	mm	1,680	
Overall height	mm	1,915	
Wheelbase	mm	2,625	
Front overhang	mm	700**	
Rear overhang	mm	830**	
Tread	Front	mm	1,435
	Rear	mm	1,435
Minimum turning radius	m	4.9	
Minimum ground clearance	mm	190	
Capacity			
Seating capacity	persons	2	
Engine			
Type	G15A		G16A
Number of cylinders	4		4
Number of valves	16		16
Piston displacement	cm ³	1,493	1,590
Bore x stroke	mm	75.0x84.5	
Compression ratio **		8.9	9.5
Maximum output **	kW/rpm	67/6,000	68/6,000
Maximum torque**	N-m/rpm	122/3,000	126/3,000
Fuel distribution	Multipoint Injection		
Transmission			
Type	5MT		
Gear ratio	1st	4.545	4.545
	2nd	2.628	2.418
	3rd	1.865	1.796
	4th	1.241	1.241
	5th	1.000	1.000
	Reverse	4.431	4.431
Final gear ratio		4.300	4.300
Chassis			
Steering	Rack & Pinion		
Brakes	Front	Ventilated disc	
	Rear	Drum, leading & trailing	
Suspension	Front	MacPherson strut & coil spring	
	Rear	Rigid axle with leaf spring	
Tyres	185R14C		
Weights			
Kerb weight (min.) / (with full options)	kg	1,180-1,115	
Gross vehicle weight	kg	1,950	
Fuel consumption			
Fuel tank capacity	litres	46	

**Specifications may vary for individual markets.

Exterior Colours



Superior White (26U)

Silky Silver Metallic (Z2S)

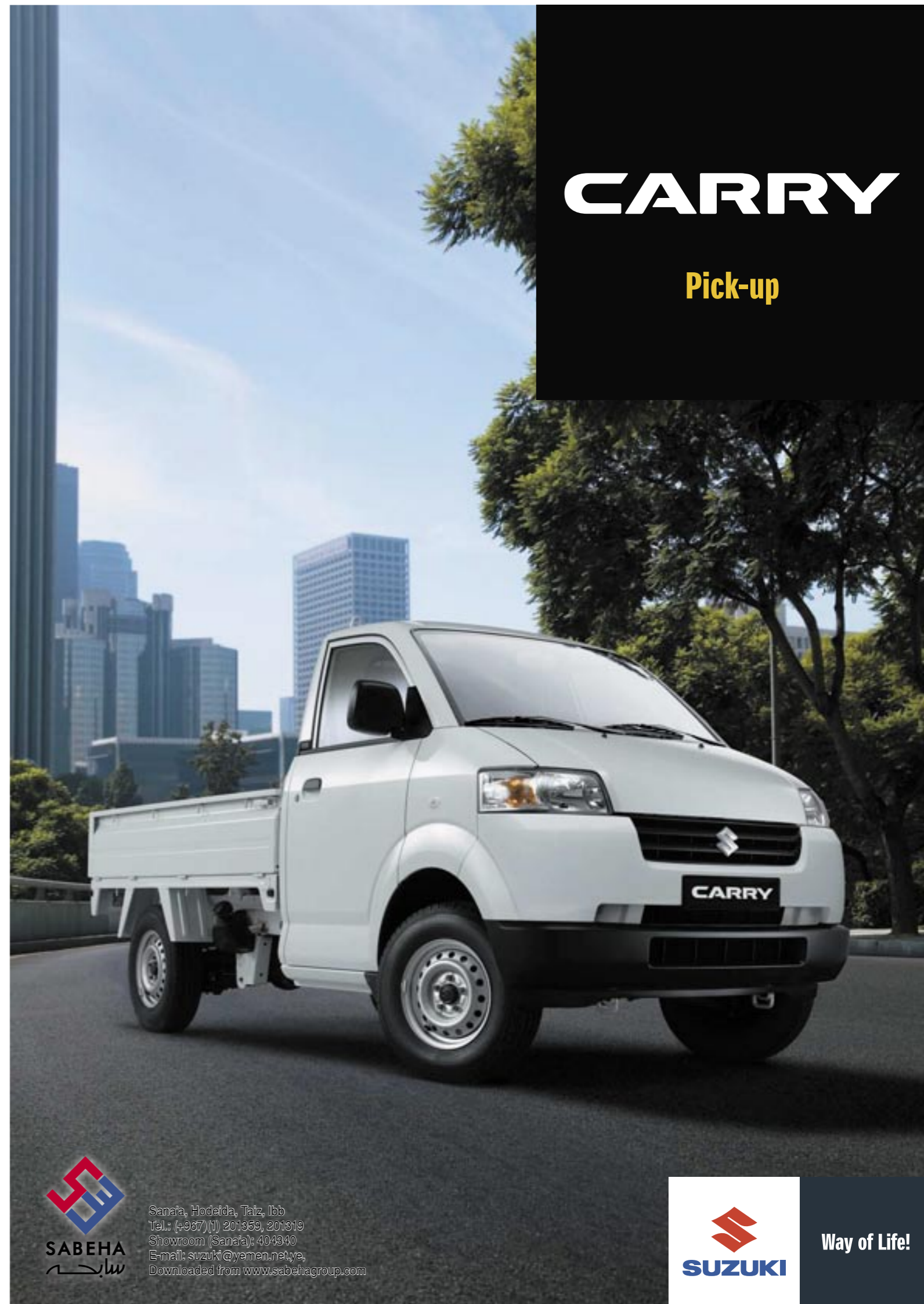
Atlantis Blue (ZBR)

Real Black (ZBC)

Standard and optional equipment available may vary for individual markets. Please enquire at your dealers, as specifications and illustrations may refer to models not available in your region. Specifications is non-metric units are approximate. SUZUKI MOTOR CORPORATION reserves the right to change, without notice, prices, colours, materials, equipment, specifications and models, and also to discontinue models.

SUZUKI
SUZUKI MOTOR CORPORATION
300 TAKATSUKA, MINAMI, HAMAMATSU, JAPAN

CARRY Pick-up LEAFLET
99999-88402-001 0711 © Printed in Japan



CARRY

Pick-up



Sana'a, Hodeida, Taiz, Ibb
Tel.: (+967) (t) 201359, 201319
Showroom (Sana'a): 404340
E-mail: suzuki@yemen.net.ye,
Downloaded from www.sabehagroup.com



Way of Life!

The ideal partner

Suzuki's CARRY Pick-up is the ideal choice for today's—and tomorrow's—light-commercial and fleet businesses, offering more load space, plus better performance, durability and reliability; all that and passenger-car comfort, too. Yet the CARRY Pick-up is still nimble enough to meet the diverse needs of its users.



The versatile load deck opens on three sides for easy loading and unloading of cargo.



Side-locking gate handles on the tailgate and panels provide added security.



Hooks on the outer tailgate and side panels tie down cargo for added convenience.

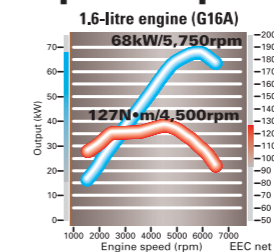


A protective rear frame stops shifting cargo from hitting the cabin.



The instrument panel looks like that of a passenger car, with all major controls and compartments smartly placed for ideal functionality.

Spirited performance meets demands



Aluminium 1.5- and 1.6-litre 16-valve engines are extremely fuel-efficient yet deliver exceptional output and torque when required.

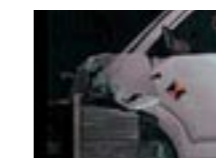


The compact and light-weight **front MacPherson strut & coil spring suspension** is specifically tuned for straight-line stability.



Large 14-inch tyres are fitted to **steel wheels** with five mounting bolts for increased durability.

Comprehensive safety ensures confidence



Suzuki's **TECT body** directs collision-impact energy away from the cabin, with the nose acting as a buffer for increased protection. **TECT**



Rigid cabin construction incorporates **side impact door beams** to help protect occupants in side collisions.



The CARRY Pick-up is equipped with reliable **ventilated disc brakes** in the front and reliable **drum brakes** in the rear.



Headlamps are well elevated for better all-round visibility plus reduced vulnerability in minor collisions.

All-round utility satisfies expectations



Front door step boards and **front passenger's access support grip** ease cabin entry and exit.



Handy cockpit compartments, like **glove box** and **driver's side storage pocket**, keep small items within easy reach.

