

SX4

S E D A N



Standard and optional equipment available may vary for individual markets. Please enquire at your dealers, as specifications and illustrations may refer to models not available in your region. Specifications in non-metric units are approximate. SUZUKI MOTOR CORPORATION reserves the right to change, without notice, prices, colours, materials, equipment, specifications and models, and also to discontinue models.

Note: Images of vehicles without number plates on public roads are composite photos.

 **SUZUKI**
SUZUKI MOTOR CORPORATION
300 TAKATSUKA, MINAMI, HAMAMATSU, JAPAN


SABEHA
سابها

Sana'a, Hodaida, Taiz, Ibb
Tel: (+967) (1) 201359, 201319
Showroom (Sana'a): 404340
E-mail: suzuki@yemen.net.ye
Downloaded from www.sabehagroup.com

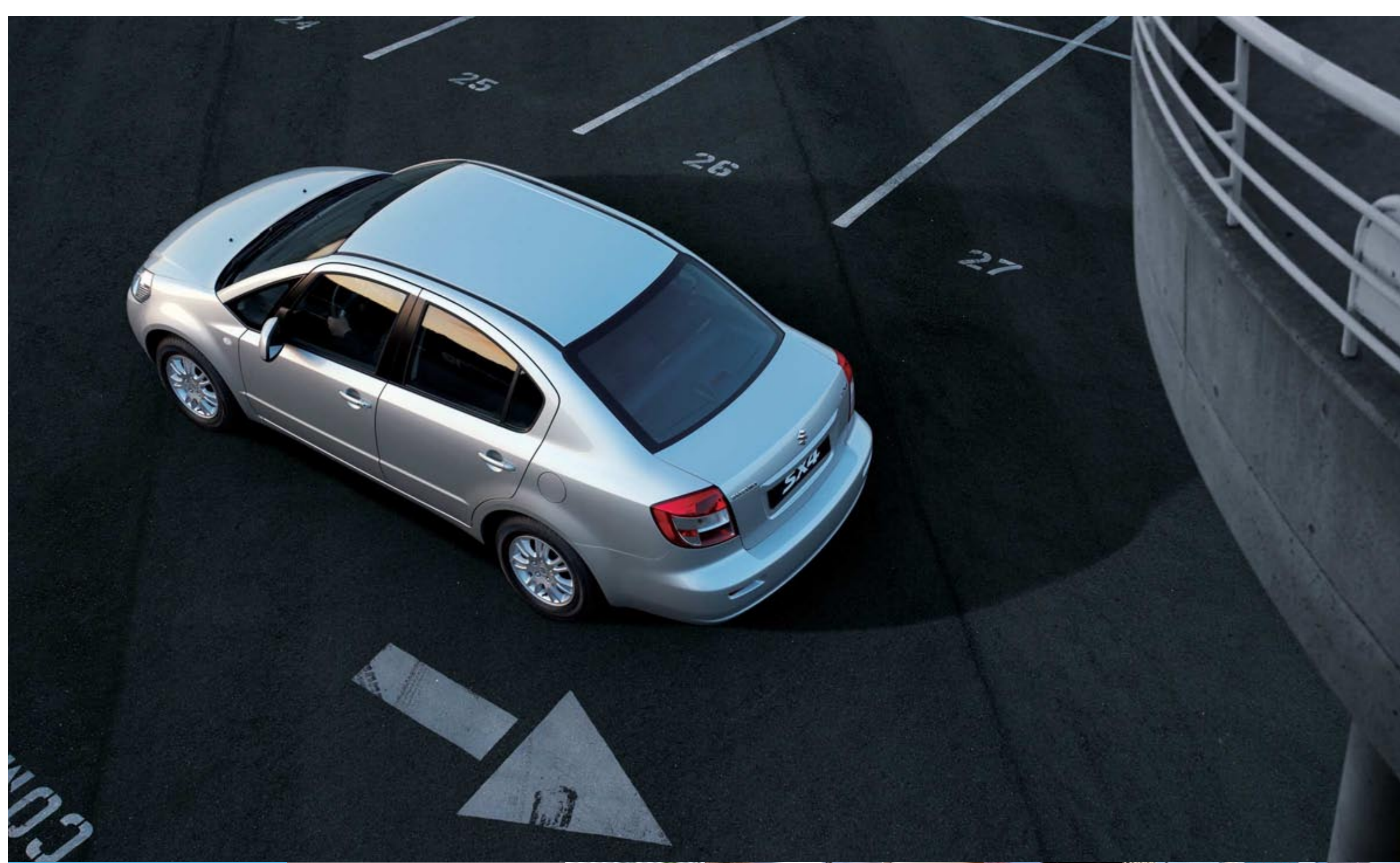

SUZUKI

Way of Life!

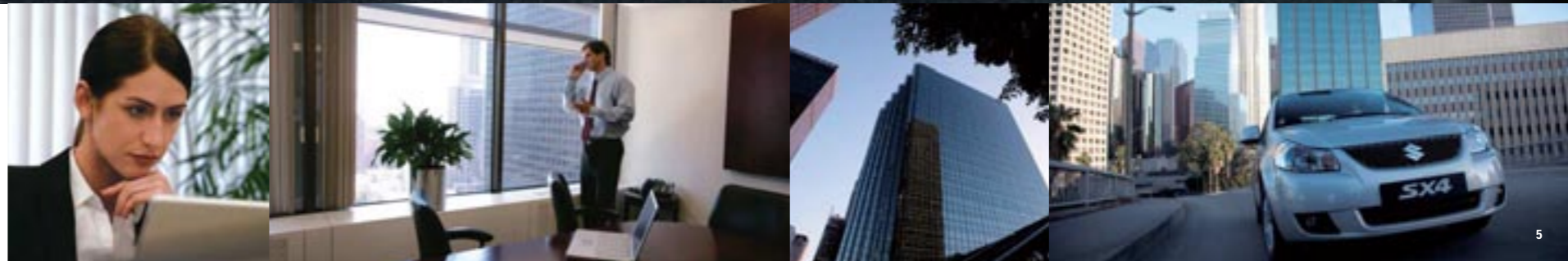
The upright style of success

Success is what you work for. Now it's time to take the next step, with the all-new Suzuki SX4 Sedan. Its unique blend of striking styling, expansive interior and spirited performance encourages you to enjoy your journey through life to the full. Move forward to success.





SX4 Sedan shown with options.

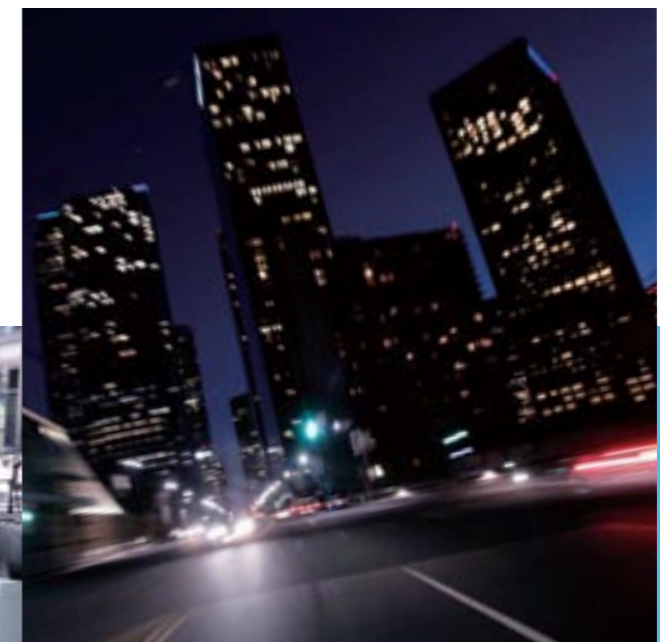


SX4 Sedan shown with options.



Enjoy your drive ahead

Every drive, short or long, is pure joy. In the crowded urban environment or on the exhilarating open road, the all-new Suzuki SX4 Sedan takes you there with upright style and confident performance. And with enhanced satisfaction and pride of ownership.

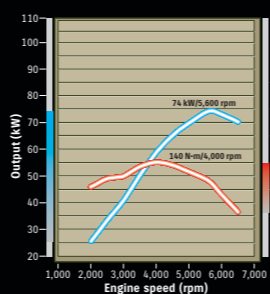
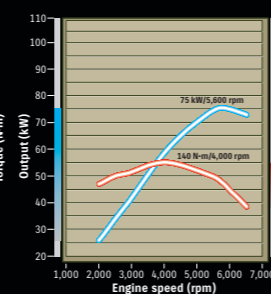
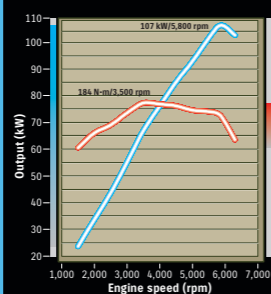


SX4 Sedan's engines are specifically tuned to deliver plentiful torque for relaxed driving on crowded city streets, along with high power for enjoyable motorway cruising. In addition, all three units offer excellent fuel economy.

2.0-litre 16-valve DOHC
This top-of-the-line power plant delivers exciting performance from full torque in the low end to smooth high end response. Thanks to its sporty athleticism, every drive — business or pleasure, in the city or on the open road — becomes an enjoyable, memorable experience.

1.6-litre 16-valve DOHC VVT
Confident power and excellent fuel economy combine in this powerful engine. An advanced Variable Valve Timing (VVT) system delivers instant, spirited response across the engine's speed range. An electronic throttle control body further enhances driveability for greater driving pleasure.

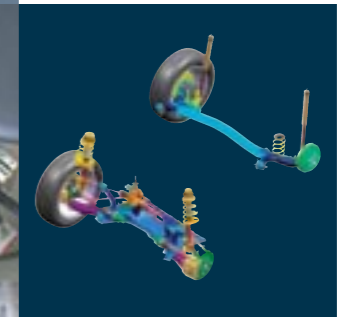
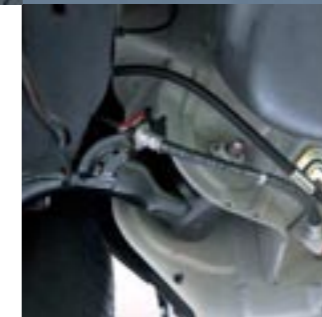
1.6-litre 16-valve DOHC
This lively, spirited engine combines confident power with excellent fuel economy to give you the best of both worlds. Thanks to Suzuki's electronic throttle control body, the engine offers superb driveability, making all your journeys relaxing and enjoyable.



Smooth-shifting transmissions
Take your pick from a slick-shifting 5-speed manual transmission or the hands-off convenience of a 4-speed automatic. Whichever you choose, you'll enjoy superb all-round performance that makes stop-start city driving as relaxing and enjoyable as the freedom of uninterrupted motorway cruising.



Rigid body, responsive suspension
The highly rigid body features reinforcements in key areas and large cross-section members to deliver high levels of bending and twisting rigidity without adding excess weight. Independent MacPherson strut front suspension and highly rigid torsion-beam rear setup provide responsive, linear handling allied with remarkably smooth riding comfort.



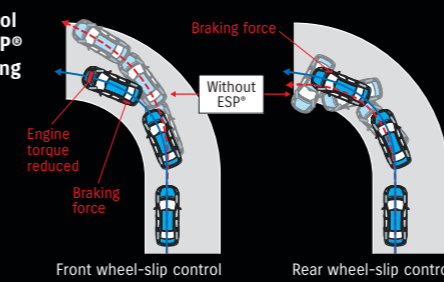
Availability of the equipment and features shown may vary for individual markets.



Stability control function of ESP® during cornering

— With ESP®
 - - - Without ESP®

*ESP is a registered trademark of Daimler AG.



Powerful, proactive safety

Active safety starts with the upright position and the high eye point it gives; from the driver's seat you enjoy a clear all-round view to help anticipate and avoid hazardous situations. To assist in emergency braking situations, there's ABS to prevent wheel lockup and help maintain steering control when avoiding obstacles, and EBD to vary brake force distribution according to load and prevent rear wheel lockup. Certain models allow an upgrade to ESP® (Electronic Stability Program)* comprised of four major functions — ABS, EBD, traction control and stability control — to further enhance stability through proactive braking and engine control measures.



Protect your loved ones

Nothing is more important than the safety of your loved ones. So the all-new Suzuki SX4 Sedan is packed with active and passive safety measures to protect you and those you care for on the road. And you enjoy the peace of mind that first-class safety brings.

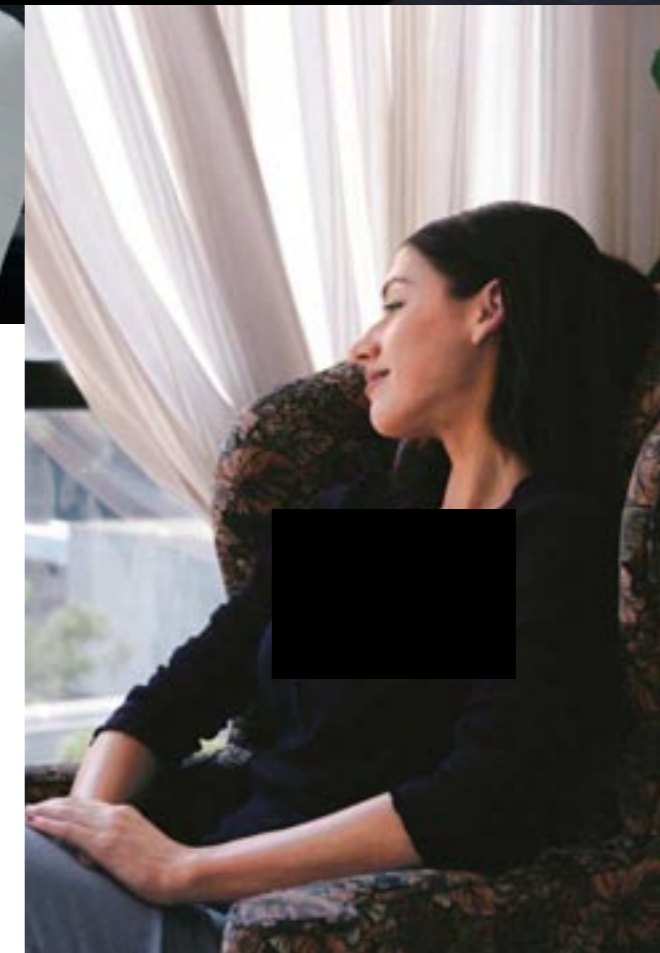


Note: The SRS airbags are shown inflated for descriptive purposes.



Reassuring passive safety

Passive safety is built right into the body with a rigid safety space in the cabin while front and rear crush zones crumple to absorb impact energy. The interior, too, is specifically designed for safety with numerous measures to help reduce injury from secondary impacts. Another layer of safety is added by dual front SRS (Supplemental Restraint System) airbags, front three-point ELR (Emergency Locking Retractor) seatbelts with pre-tensioners and force-limiters and rear three-point ELR seatbelts. Finally, head restraints help reduce the risk of whiplash injuries.



Availability of the equipment and features shown may vary for individual markets.



Availability of the equipment and features shown may vary for individual markets.

Take control of your destiny

Sit behind the wheel and take full command of the all-new Suzuki SX4 Sedan. The stylish cockpit fills you with anticipation of the drive ahead. The upright seating position and high eye point give you a clear view all around you. And you stay firmly in control of your destiny.

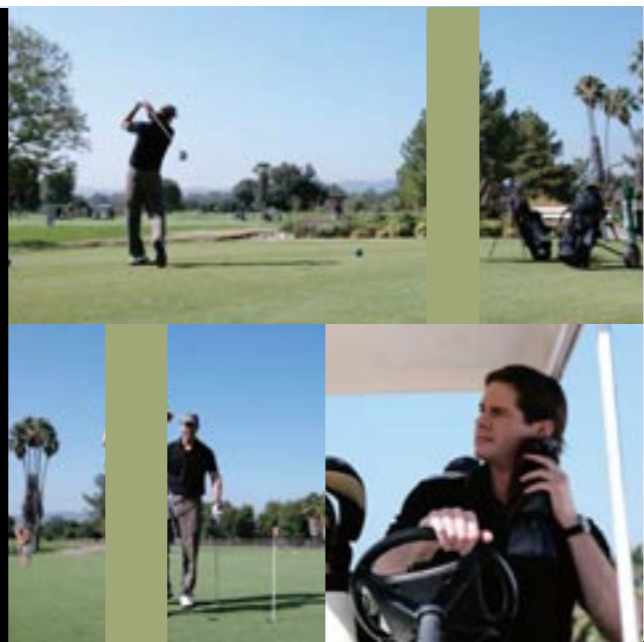
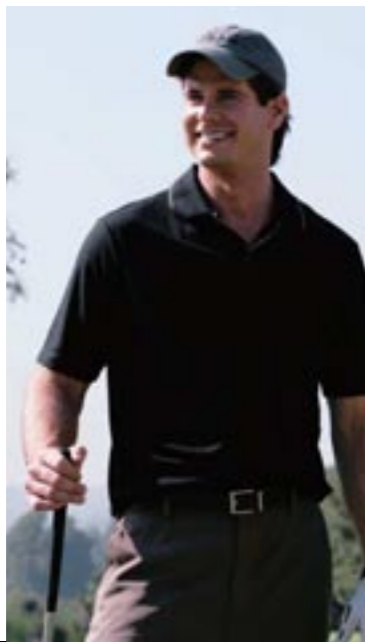


Convenience and control
An easy-to-read information display located above the centre panel gives details of time and outside temperature, as well as both average and current fuel consumption. The dials of the available fully automatic air conditioner are equipped with ring lights that both make them easier to see, and also introduce a design element from the instrument panel to enhance the cockpit's coordinated look. The available Keyless Start system features a transmitter on the ignition key that allows you to lock and unlock the doors by pushing a button on the door handle, as well as start the engine with a knob located on the steering column — all without taking the key out of your pocket or handbag.

Audio control at your fingertips
Available steering wheel-mounted audio controls give greater operating ease through audio adjustment without taking your hands away from the steering wheel. The premium audio system with a CD tuner and MP3 capability delivers high-quality sound throughout the cabin. Up to eight speakers (four speakers and four tweeters) in the front and rear doors are available for superb in-car entertainment.



SX4 Sedan shown with options.



Surround yourself with comfort

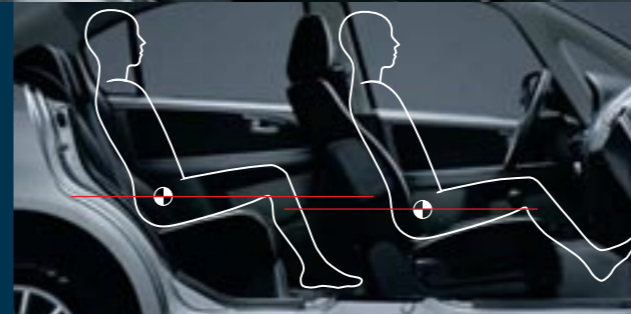
Sit anywhere in the all-new Suzuki SX4 Sedan and you find spacious, upright comfort. The airy cabin invites you to relax and enjoy conversation with your travelling companions as the journey rolls by. Stylish and intelligent, Suzuki SX4 Sedan is a fitting reward for all your efforts on the road to success.



Vibration- and noise-reduction measures
Specially-developed sound insulation materials are widely employed throughout the vehicle to keep noise levels exceptionally low. In addition, flush body surfaces and double-sealing weather-stripping reduce wind noise. Vibration-damping materials beneath the cabin and around the engine compartment also help to lower noise levels.



Thoughtful storage compartments
Thoughtfully placed storage compartments throughout the cabin keep items out of the way yet close to hand. Two cup holders in the front console, one cup holder in the rear, and four bottle holders (one on each door) offer all five occupants individual beverage holders. The under-seat tray and seatback pocket located on the front passenger's seat provide convenient storage for maps and magazines.



The height of comfort
The rear seats are slightly higher than the front seats, giving passengers in the rear an expansive field of vision. What's more, the taller than conventional, upright stance allows greater room and comfort, as well as easier entry and exit through the wide-opening rear doors.

Luggage room utility
The tall cabin and upright seating position provide a naturally comfortable posture as well as more room for occupants and their luggage. At 515 litres (VDA), the trunk is very large for this class, and 60:40-split folding rear seats enable transport of long or awkwardly shaped items.

SX4 Sedan shown with options.



SX4 Sedan shown with options.